



# EXX-25246000 Planetary Series

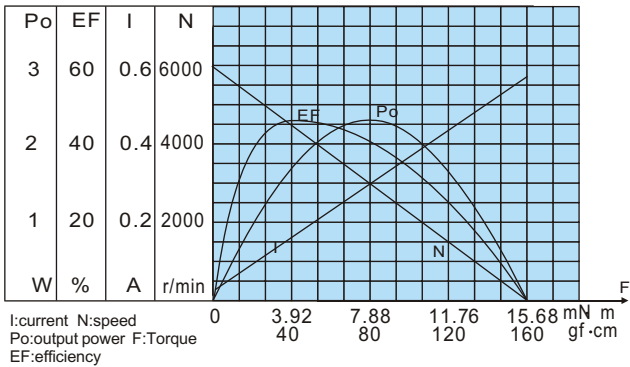
(24VDC STANDARD)

OUTPUT POWER: 1.2W(APPROX)

WEIGHT: 80~90g(APPROX)

**Typical applications:** Automat, electrical controlled valve, robot, door locks, auto shutter, water meter IC card, central heating IC card, automatic energy saving bath, aeromodelling, electronic locks, kind of finger-electroni lock.

## MOTOR CHARACTERISTICS

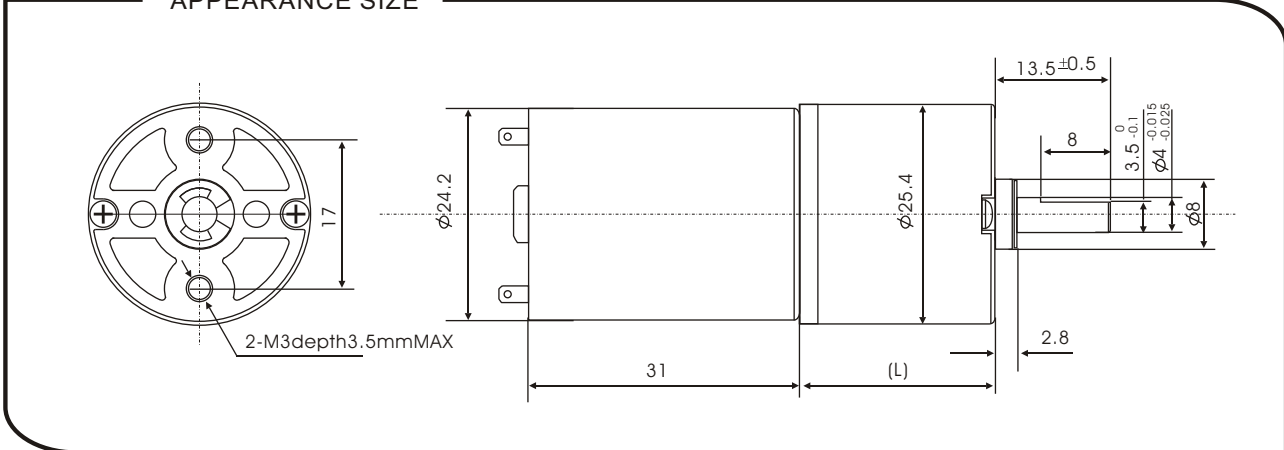


I: current N: speed  
Po: output power F: Torque  
EF: efficiency

## MOTOR TORQUE/SPEED/CURRENT

Rated Voltage	24VDC
No load speed	6000r/min
No load current	50mA
Rated torque	40gf · cm 3.92mN · m
Rated current	0.17A
Rated speed	5300r/min
Stall torque	160gf · cm 15.68mN · m
Stall current	0.6A

## APPEARANCE SIZE



## GEARED MOTOR TORQUE/SPEED/CURRENT

Geared motor name	Rated Volt. V	No load		Load torque				At maximum efficiency		Output power W	Number of gear trains	Gearbox length "L" mm
		Current mA	Speed r/min	Current mA	Speed r/min	Torque		Kgf · cm	N · m			
						Kgf · cm	N · m					
EXX-25246000-4K	24	≤50	1500	≤170	1100	0.12	0.01	0.4	0.04	1.3	1	18
EXX-25246000-16K	24	≤50	375	≤170	300	0.4	0.04	1.6	0.16	1.2	2	18
EXX-25246000-22.5K	24	≤50	266	≤170	200	0.6	0.06	2.4	0.24	1.2	2	18
EXX-25246000-64K	24	≤50	93	≤170	70	1.6	0.16	6.4	0.63	1.1	3	23
EXX-25246000-90K	24	≤50	66	≤170	50	2.2	0.22	8.8	0.86	1.1	3	23
EXX-2546000-107K	24	≤50	56	≤170	42	2.6	0.25	10.4	1.02	1.1	3	23
EXX-25246000-256K	24	≤50	23	≤170	16.5	6	0.59	24	2.35	1.0	4	28
EXX-25246000-304K	24	≤50	19.5	≤170	14	7.1	0.7	28	2.74	1.0	4	28
EXX-25246000-361K	24	≤50	16.5	≤170	12	8.3	0.81	30	2.94	1.0	4	28
EXX-25246000-428K	24	≤50	14	≤170	10	10	0.98	30	2.94	1.0	4	28
EXX-25246000-509K	24	≤50	11.7	≤130	8	10	0.98	30	2.94	0.8	4	28
Packing Details	CTN size: 41X26XH23CM 100pcs/CTN N.W. 11Kgs											